

Engineering Design

Industry Sector: Engineering & Architecture



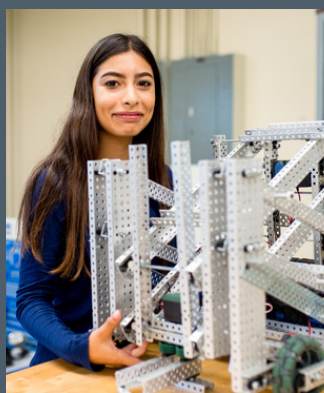
Introductory Course: Introduction to Engineering Design

Sharpen your problem-solving skills with emphasis placed on the development of three-dimensional solid models.



Concentrator Course: Principles of Engineering

Use your critical thinking skills to analyze, synthesize, and design engineering systems. Apply your skills and knowledge of math, science, communication, and technology in complex problem solving activities.



Capstone Course: Digital Electronics

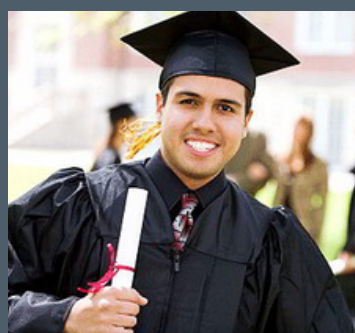
Learn the process of combinational and sequential logic design, engineering standards and technical documentation. Program and build electrical circuits including robotics.

CAREER PATHWAYS IN ENGINEERING



What careers are related?

- Electrical Engineer
- Project Architect
- Manufacturing Design Engineer
- Mechanical/Electrical Drafter
- Structural Designer
- Aerospace Engineer



Does this mean I have to major in Engineering?

Not at all. Our pathway is designed to give you an edge in the college admissions process through a nationally-recognized STEM program.

PLTW: PROJECT LEAD THE WAY



What is PLTW?

PLTW is a STEM program whose students outperform their peers in school, are better prepared for post-secondary studies, and are more likely to consider careers as scientists, technology experts, engineers, mathematicians.



How can I join this pathway?

If you are entering South El Monte High School and taking Integrated Math 2, you can be admitted right away and enroll in our Introductory course. Students entering in IM 1 may join their sophomore year.

QUESTIONS?

- Speak with any of our counselors or administrators about this pathway and others.
- Websites: For South El Monte High School: semhs.schoolloop.com
- For Project Lead the Way: www.pltw.org
- For the El Monte Union High School District: emuhsd.org